

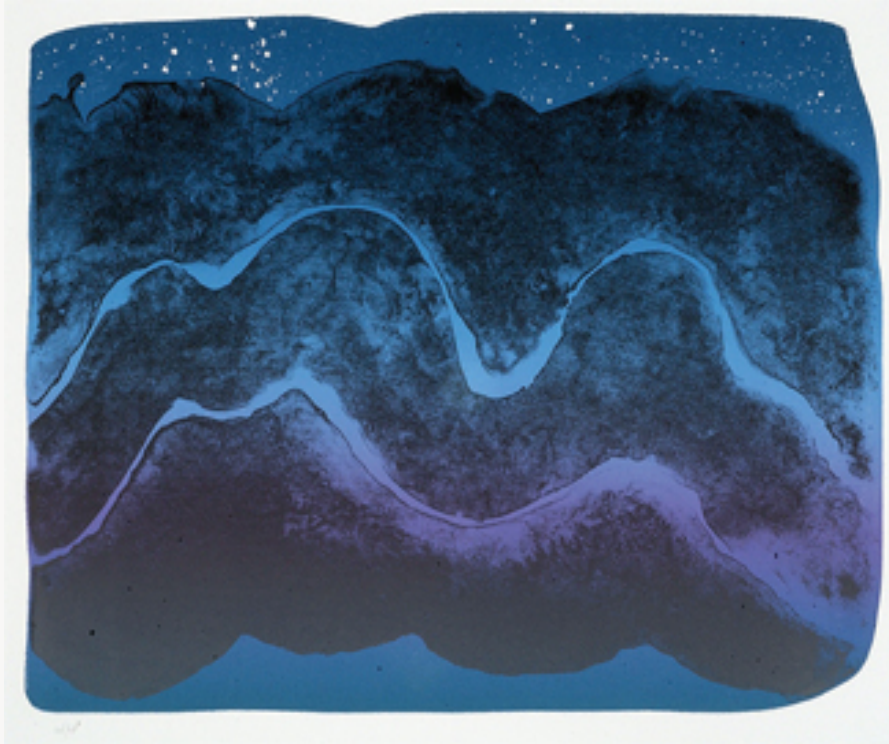


Work Health and Safety
SES Briefing
20 October 2011

PUTTING YOU *FIRST*

'NARRAGUNNAWALI'

Taking care of people and place



Murrumbija dooligah, lithograph, 1996 by Matilda House, Ngunnawal elder
Collection of the Canberra Museum and Gallery

PUTTING YOU *FIRST*

TURNING POLICY INTO ACTION

Delivering on Government priorities



Better serving the Australian people

- > Building a more secure Australia, given the national security challenges we face
- > Building a stronger Australia, with a successful economy to enable us to deliver on the needs of our people
- > Building a fairer Australia, based on equality of opportunity, a humane safety net and acting on disadvantage.

COAG will progress themes: a 'workable federation'

The goals are to boost productivity, increase workforce participation and deliver better services for the community.

COAG Communiqué, July 2008

PUTTING YOU *FIRST*

YOUR WORK AS A LEADER

Setting the 'tone at the top'

What's important?

- > You can contribute to a stronger, fairer Australia by ensuring your people are not harmed at work
 - Delivers improved productivity
 - Improves workforce participation
 - Increases social inclusion
- > Give high priority to prevention, early intervention and embrace the health benefits of work
- > New model work health and safety laws reinforce that you set the 'tone at the top'.

Setting the Tone at the Top

Simon McKeon
Australian of the Year 2011

PUTTING YOU *FIRST*

APS BLUEPRINT

A key part of our authorising environment



Steve Sedgwick, APSC

“Strong organisations come from strong leaders and strong leadership – **passionate people** who know what they’re about, have a **capacity to motivate** and **inspire others** and **care for them.**”

‘Talking about 2015’ – interview May 2010

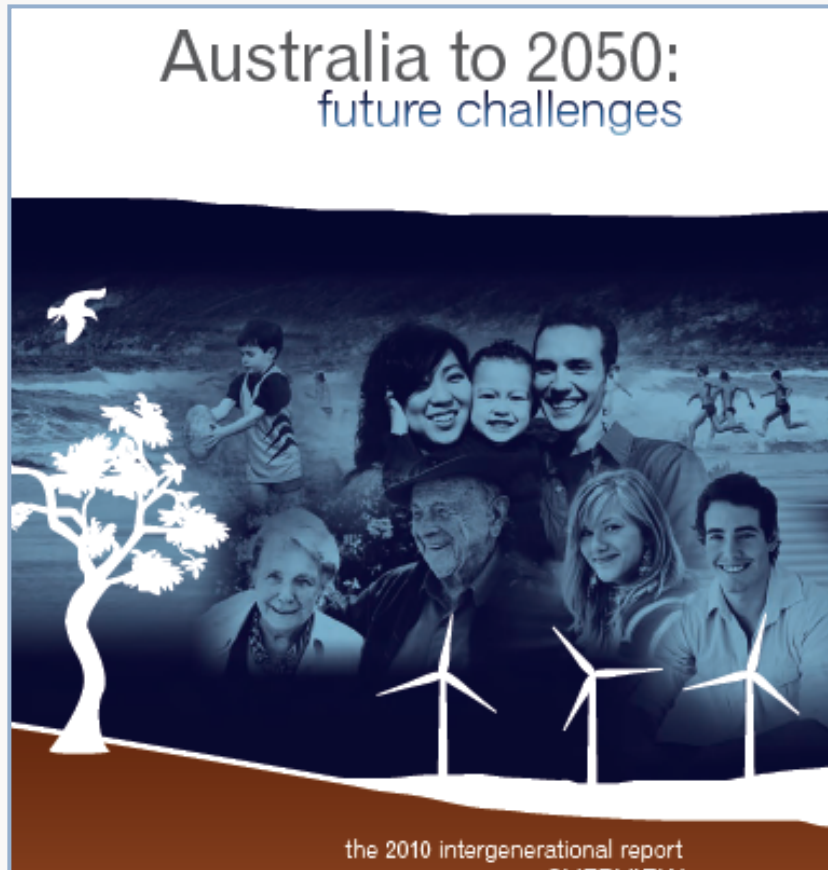
PUTTING YOU *FIRST*



PUTTING YOU *FIRST*

OUR 2015 PLAN

Tackling the challenges to a life in work



PUTTING YOU *FIRST*

STRATEGIC PRIORITIES

Focus on prevention and early intervention

OUR STRATEGIC THEMES	12 STRATEGIC PRIORITIES		
Innovation	Healthy at work, safe at work	Back at work	Scheme at work
	1. Promote worker health, well being and resilience.	5. Strengthen recovery and support services for workers with injury.	9. Invest in our people working together to deliver quality service in a high-performing Comcare.
	2. Prevent harm in federal workplaces.	6. Improve injury management practices.	10. Strengthen business intelligence and improve knowledge management.
Collaboration	3. Stronger enforcement and justice outcomes.	7. Improve decision making with decision support tools.	11. Build partnerships for research and strengthen strategic policy.
	4. Transition to national model workplace health and safety laws.	8. Strengthen expertise in asbestos claim management.	12. Strengthen financial and business integrity for sustainability.
Impact			

PUTTING YOU *FIRST*

AGEING POPULATION

Increased fiscal pressure and demands



PUTTING YOU *FIRST*

CHRONIC DISEASE

We need a more active healthier life



PUTTING YOU *FIRST*

IMPACT AT APS WORKPLACES

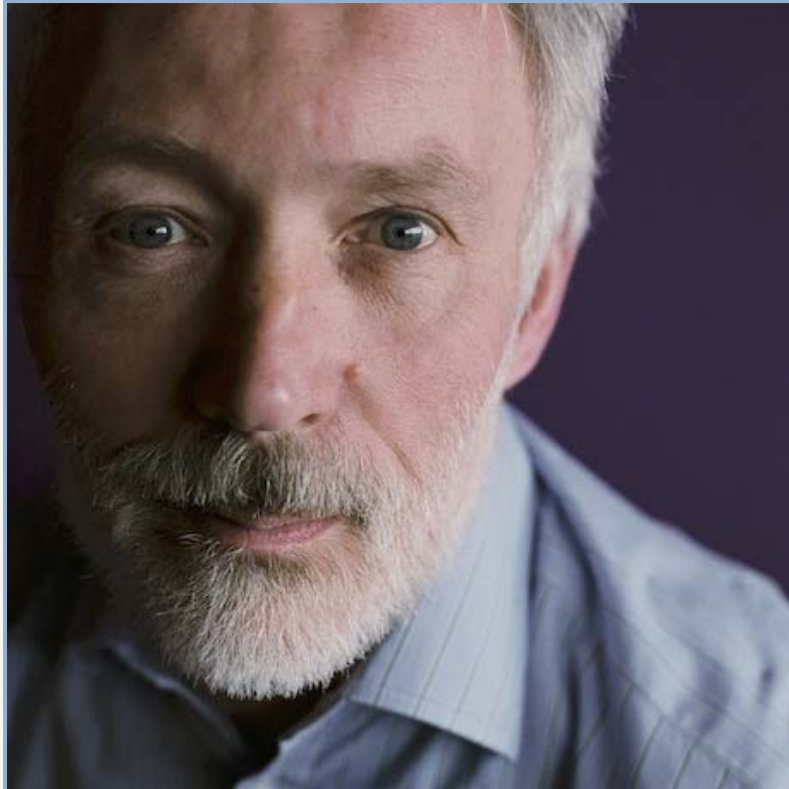
Too many people are being harmed



PUTTING YOU *FIRST*

MENTAL HEALTH

We need to do more at our workplaces



Australia is at the tipping point.
It's about solving the problems of
needless disability.
Early intervention is a key
principle.
We must ensure that those who
have already been swept away are
rescued.

Prof Patrick McGorry AO

PUTTING YOU *FIRST*



PUTTING YOU *FIRST*

AUSTRALIANS AT WORK

Healthy workers, healthy community

The workplace is centre stage

- > Workers spend a considerable amount of time at work
- > The workplace is key in changing the health of Australians
- > Use the workplace to drive important behaviour changes
- > Head off problems and intervene early.



PUTTING YOU *FIRST*

STRATEGIC PRIORITIES

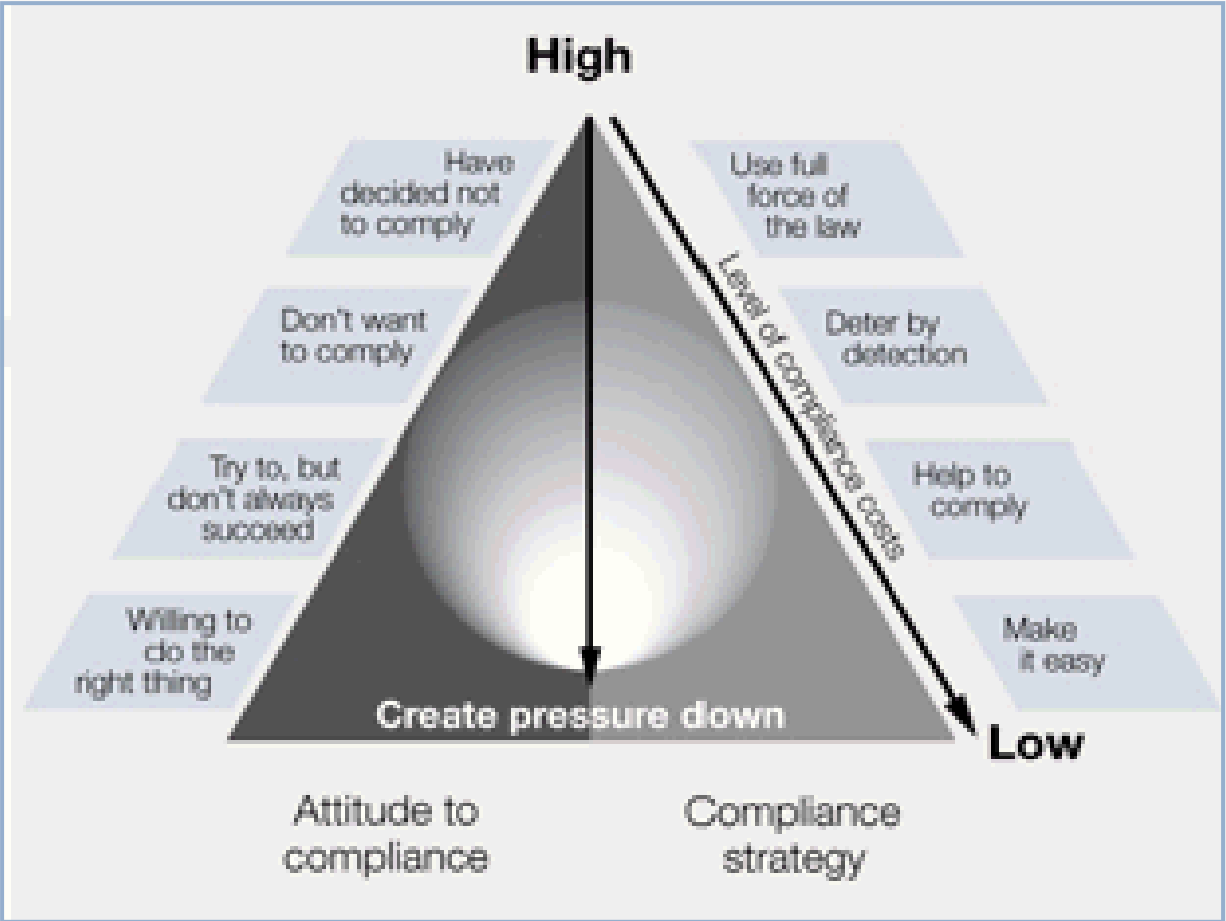
Focus on prevention and early intervention

OUR STRATEGIC THEMES	12 STRATEGIC PRIORITIES		
Innovation	Healthy at work, safe at work	Back at work	Scheme at work
	1. Promote worker health, well being and resilience.	5. Strengthen recovery and support services for workers with injury.	9. Invest in our people working together to deliver quality service in a high-performing Comcare.
	2. Prevent harm in federal workplaces.	6. Improve injury management practices.	10. Strengthen business intelligence and improve knowledge management.
Collaboration	3. Stronger enforcement and justice outcomes.	7. Improve decision making with decision support tools.	11. Build partnerships for research and strengthen strategic policy.
	4. Transition to national model workplace health and safety laws.	8. Strengthen expertise in asbestos claim management.	12. Strengthen financial and business integrity for sustainability.
Impact			

PUTTING YOU *FIRST*

APPROACH TO REGULATION

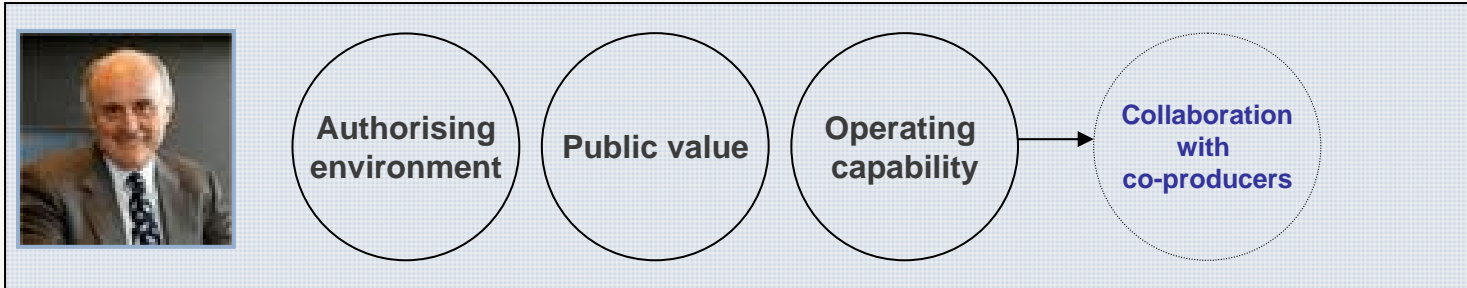
Adopt the behavioural pyramid



PUTTING YOU *FIRST*

APPROACH TO REGULATION

Delivering improved public value



Adopt Braithwaite's 'behavioural' model

- > Comcare uses the advantages of large business bias
- > People who receive a service are best placed to design it
- > Self-regulation model promotes workplace investments
- > From 'activity-based reaction to harm' to better understand 'threats'
- > Assess and reward 'trusted actors'
- > Target those who don't get the health and safety message
- > A focus on efficiency: 'value for money' underpins the model

PUTTING YOU *FIRST*

STRATEGIC PRIORITIES

Focus on prevention and early intervention

OUR STRATEGIC THEMES		12 STRATEGIC PRIORITIES		
	Healthy at work, safe at work	Back at work	Scheme at work	
Innovation	1. Promote worker health, well being and resilience. 2. Prevent harm in federal workplaces.	5. Strengthen recovery and support services for workers with injury. 6. Improve injury management practices.	9. Invest in our people working together to deliver quality service in a high-performing Comcare.	
Collaboration	3. Stronger enforcement and justice outcomes. 4. Transition to national model workplace health and safety laws.	7. Improve decision making with decision support tools. 8. Strengthen expertise in asbestos claim management.	10. Strengthen business intelligence and improve knowledge management. 11. Build partnerships for research and strengthen strategic policy.	
Impact			12. Strengthen financial and business integrity for sustainability.	

PUTTING YOU *FIRST*



PUTTING YOU *FIRST*