



Australian Government

Australian Public Service Commission

# Australian Public Service Statistical Bulletin

2006-07



State of the Service Series 2006-07

© Commonwealth of Australia 2007

This work is copyright. Apart from any use as permitted under the *Copyright Act 1968*, no part may be reproduced by any process without prior written permission from the Commonwealth. Requests and inquiries concerning reproduction and rights should be addressed to the Commonwealth Copyright Administration, Attorney-General's Department, Robert Garran Offices, National Circuit, Barton, ACT 2600, or posted at <http://www.ag.gov.au/cca>.

ISBN 978-0-9803978-7-1

# Equal employment opportunity

The Commissioner's Directions specify that the APS Value on equity in employment requires, in particular, measures aimed at eliminating any employment-related disadvantage on the basis of:

- being an Indigenous Australian
- sex
- race or ethnicity
- physical or mental disability.

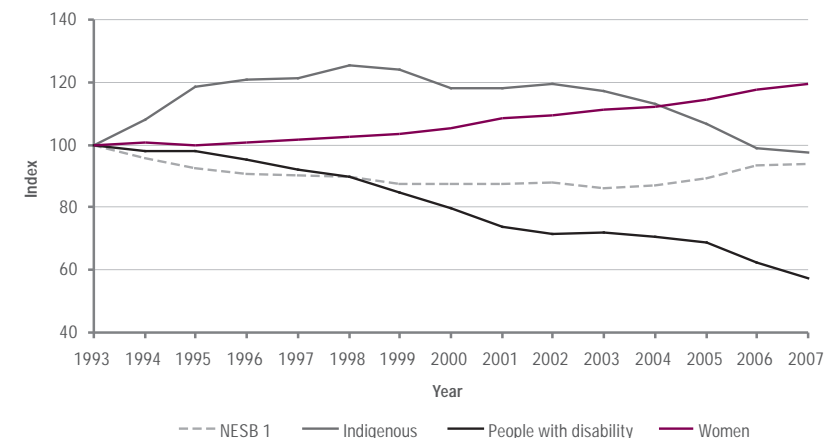
With the exception of sex, Equal Employment Opportunity (EEO) data is supplied to agencies by individuals on a voluntary basis, and forwarded by agencies to be entered onto APSED. Overall, non-response varies widely between agencies.

The current focus on improving employment outcomes for people with disability and for Indigenous Australians in the APS provides an even greater emphasis for ensuring that the quality of data is robust. The Commission continues to work with agencies to encourage employees to provide this data to their agency's HR system. There has been some improvement in the quality of data provided by agencies this year, however the overall quality continues to be poor and there are a number of agencies still providing little or no data on the diversity status of their employees.

Because no new measurement regime has yet been agreed for 'race or ethnicity', for the purpose of this publication NESB 1 and 2 are used for reporting purposes. NESB 1 refers to people born overseas who arrived in Australia after the age of five and whose first language was not English. NESB 2 refers to children of migrants, including: those who were born overseas and arrived in Australia before the age of five but did not speak English as a first language; those who were Australian born but did not speak English as a first language and had at least one NESB 1 parent; and those people who were Australian born and had neither parent speaking English as a first language.

Figure 12 shows the change in the representation of the four EEO groups from their proportion at June 1993. Each of these proportions is weighted by the ratio of the June 1993 total ongoing APS number to the number of employees in the respective EEO group at June 1993. Weighting eliminates the effects that the changes in the overall size of the APS have on representation. The index is given a value of 100 at June 1993, and rises and falls proportionally with the particular group's change in the weighted number over time. For example, at June 1993 the number of Indigenous Australians was 3085 out of an ongoing APS population of 142,891. By 1999 the number of Indigenous Australians had fallen to 2731 and the ongoing APS number had dropped to 102,004. Therefore the weighted IA number for 1999 is 3826, which is 124.0% of the original index

**Figure 12: Change in population, weighted and indexed, for EEO groups, 30 June 1993 to 30 June 2007**



Source: Table 46, page 108

**Table 46: Ongoing staff: EEO status, 30 June 1993 to 30 June 2007**

<i>EEO group</i>	<i>June</i>														
	<i>1993</i>	<i>1994</i>	<i>1995</i>	<i>1996</i>	<i>1997</i>	<i>1998</i>	<i>1999</i>	<i>2000</i>	<i>2001</i>	<i>2002</i>	<i>2003</i>	<i>2004</i>	<i>2005</i>	<i>2006</i>	<i>2007</i>
	<b><i>Number</i></b>														
Women	67762	67737	61344	61380	57243	52754	49992	51465	55906	58247	63500	65092	66910	75247	81187
Indigenous Australians	3085	3312	3329	3357	3121	2938	2731	2624	2766	2891	3047	2986	2842	2880	3018
People with disability	8214	7982	7309	7043	6312	5598	4980	4726	4612	4609	4969	4976	4873	4818	4717
NESB 1	8781	8352	7376	7173	6593	5972	5497	5528	5847	6056	6372	6551	6783	7733	8289
NESB 2	10115	10140	9686	9893	9521	9178	8910	8888	8944	9004	9299	9357	9411	10161	10613
	<b><i>Percentage</i></b>														
Women	47.4	47.8	47.2	47.7	48.1	48.6	49.0	49.9	51.4	51.9	52.8	53.1	54.2	55.8	56.6
Indigenous Australians	2.2	2.3	2.6	2.6	2.6	2.7	2.7	2.5	2.5	2.6	2.5	2.4	2.3	2.1	2.1
People with disability	5.7	5.6	5.6	5.5	5.3	5.2	4.9	4.6	4.2	4.1	4.1	4.1	3.9	3.6	3.3
NESB 1	6.1	5.9	5.7	5.6	5.5	5.5	5.4	5.4	5.4	5.4	5.3	5.3	5.5	5.7	5.8
NESB 2	7.1	7.2	7.5	7.7	8.0	8.5	8.7	8.6	8.2	8.0	7.7	7.6	7.6	7.5	7.4

Source: APSED

**Table 47: Ongoing staff: agency by EEO group, 30 June 2007**

Agency	Sex			Indigenous			Disability			English Speaking Background			
	Men	Women	Total	Yes	No	No data	Yes	No	No data	NESB 1	NESB 2	Eng. Spkng.	No data
Agriculture, Fisheries & Forestry	2680	1962	4642	65	3347	1230	95	3150	1397	228	305	2757	1352
Attorney-Generals	467	782	1249	19	1027	203	23	1000	226	36	44	896	273
- Administrative Appeals Tribunal	36	81	117	2	114	1	2	111	4	11	10	94	2
- AUSTRAC	96	142	238	1	230	7	2	228	8	23	27	176	12
- ACLEI	4	2	6	.	5	1	.	5	1	1	.	3	2
- Australian Crime Commission	226	225	451	1	225	225	8	345	98	3	33	214	201
- Australian Customs Service	3399	2331	5730	103	3623	2004	129	2678	2923	209	446	3719	1356
- CrimTrac Agency	40	41	81	.	79	2	7	69	5	10	6	61	4
- Family Court of Australia	198	389	587	10	495	82	31	497	59	19	67	322	179
- Federal Court of Australia	86	165	251	2	181	68	8	139	104	16	24	130	81
- Federal Magistrates Court	15	93	108	.	106	2	2	101	5	3	6	83	16
- Federal Privacy Commissioner	21	27	48	.	24	24	1	21	26	.	2	16	30
- HREOC	27	56	83	1	42	40	3	40	40	3	4	25	51
- ITSA	112	139	251	3	207	41	6	196	49	22	26	144	59
- National Native Title Tribunal	69	142	211	23	188	.	6	205	.	11	5	167	28
- Commonwealth DPP	153	291	444	8	386	50	15	383	46	21	48	314	61
- Office of the Parl. Counsel	17	31	48	.	42	6	.	42	6	2	1	37	8
Communications, IT & the Arts	317	478	795	40	683	72	15	684	96	38	44	572	141
- ACMA	291	236	527	3	515	9	11	492	24	43	51	406	27
- Australian Film Commission	103	131	234	.	137	97	10	123	101	3	10	133	88
- Aust. National Maritime Museum	49	52	101	1	100	.	3	94	4	3	4	94	.
- ASADA	27	24	51	.	18	33	.	16	35	1	.	14	36
- National Archives of Australia	159	225	384	2	342	40	11	327	46	26	24	272	62
- National Library of Australia	123	314	437	3	421	13	15	410	12	71	29	332	5
- National Museum of Australia	82	157	239	8	187	44	6	202	31	10	6	181	42
Defence	12487	7643	20130	120	8092	11918	659	6400	13071	615	1581	13579	4355
- Defence Housing Australia	147	413	560	1	528	31	5	523	32	20	24	437	79
DEST	771	1337	2108	190	1655	263	59	1750	299	113	99	1338	558
- AIATSIS	15	35	50	11	30	9	4	30	16	.	.	32	18
- Australian Research Council	20	45	65	.	49	16	3	54	8	7	4	43	11
- Questacon	37	38	75	1	74	.	4	69	2	2	5	65	3
DEWR	1600	2077	3677	136	1986	1555	108	1837	1732	149	125	1650	1753
- ABCC	70	49	119	2	34	83	.	32	87	1	2	32	84
- Australian Fair Pay Commission	9	13	22	.	5	17	.	5	17	.	1	3	18
- Australian Industrial Registry	49	102	151	2	147	2	12	130	9	12	27	109	3
- Comcare	143	242	385	3	357	25	10	349	26	25	35	308	17
- EOWA	.	13	13	.	4	9	.	4	9	1	.	2	10
- Office of Workplace Services	122	148	270	3	97	170	6	82	182	6	8	78	178
Environment & Water Resources	871	994	1865	62	1285	518	48	1245	572	32	51	1078	704
- Bureau of Meteorology	1013	265	1278	4	1164	110	47	1012	219	133	76	921	148
- GBRMPA	71	96	167	9	140	18	5	135	27	5	8	101	53
- ORER	6	5	11	.	7	4	.	6	5	.	1	5	5
FaCSIA	886	1817	2703	257	2020	426	154	2111	438	95	135	1897	576
- Aboriginal Hostels Ltd.	128	220	348	289	59	.	10	276	62	5	19	232	92
- Aust. Institute of Family Studies	7	29	36	.	35	1	.	32	4	4	5	25	2
- Torres Strait Regional Authority	17	26	43	30	13	.	.	43	.	.	4	5	34

Agency	Sex			Indigenous			Disability			English Speaking Background			
	Men	Women	Total	Yes	No	No data	Yes	No	No data	NESB 1	NESB 2	Eng. Spkng.	No data
Finance & Administration	597	671	1268	6	1045	217	19	1029	220	63	74	915	216
- Australian Electoral Commission	299	453	752	7	676	69	16	670	66	18	25	391	318
- Commonwealth Grants Commission	21	11	32	.	28	4	2	25	5	4	2	21	5
- ComSuper	189	272	461	1	418	42	10	408	43	31	53	325	52
- Future Fund Management Agency	5	2	7	.	1	6	.	1	6	.	.	1	6
Foreign Affairs & Trade	1348	1303	2651	43	2475	133	30	2584	37	122	215	2156	158
- ACIAR	10	26	36	.	34	2	.	34	2	4	1	27	4
- AusAID	280	437	717	2	701	14	9	694	14	47	37	609	24
- Austrade	256	226	482	1	305	176	5	128	349	27	18	63	374
Health & Ageing	1272	2799	4071	111	3497	463	178	3566	327	236	271	3274	290
- Aust. Institute of Health & Welfare	57	119	176	.	138	38	7	144	25	19	12	123	22
- ARPANSA	79	47	126	.	91	35	3	100	23	12	10	74	30
- Cancer Australia	1	17	18	.	17	1	1	16	1	1	.	16	1
- FSANZ	32	66	98	2	68	28	.	68	30	5	4	48	41
- National Blood Authority	16	22	38	.	21	17	1	18	19	1	1	18	18
- NHMRC	48	101	149	3	122	24	8	130	11	4	8	127	10
- Professional Services Review	5	9	14	.	10	4	.	10	4	.	4	8	2
Human Services	1452	4569	6021	97	4454	1470	185	4328	1508	203	403	3574	1841
- Centrelink	8265	18361	26626	952	19526	6148	1398	14354	10874	1434	1248	12951	10993
- Medicare Australia	1069	4619	5688	102	4673	913	126	4877	685	639	481	3394	1174
Immigration	2456	3969	6425	60	5757	608	171	5415	839	786	635	4078	926
- MRT/RRT	97	160	257	2	163	92	4	115	138	27	24	88	118
Industry, Tourism & Resources	945	958	1903	9	1442	452	47	1517	339	214	167	1031	491
- Geoscience Australia	409	160	569	2	483	84	7	405	157	64	23	346	136
- IP AUSTRALIA	441	429	870	.	774	96	18	793	59	135	44	463	228
- NOPSAs	30	11	41	.	38	3	1	37	3	3	2	32	4
Prime Minister & Cabinet	178	323	501	6	459	36	8	451	42	9	28	425	39
- ANAO	144	167	311	1	122	188	3	308	.	16	22	182	91
- Australian Public Service Commission	48	129	177	11	162	4	15	158	4	8	15	149	5
- Commonwealth Ombudsman	53	87	140	1	117	22	4	108	28	5	9	100	26
- National Water Commission	10	19	29	.	29	.	1	27	1	.	.	29	.
- Office of National Assessments	46	42	88	1	80	7	3	77	8	4	5	74	5
Transport & Regional Services	669	536	1205	11	1164	30	26	1147	32	58	84	1027	36
- National Capital Authority	41	35	76	2	68	6	1	68	7	5	3	62	6
Treasury	493	457	950	6	884	60	18	901	31	66	63	705	116
- Australian Bureau of Statistics	1448	1548	2996	16	2507	473	108	2468	420	218	207	2013	558
- ACCC	294	305	599	2	583	14	8	571	20	38	48	479	34
- AOFM	19	12	31	.	23	8	1	26	4	.	4	20	7
- ASIC	599	834	1433	4	1039	390	2	1430	1	61	167	905	300
- Australian Taxation Office	10062	11275	21337	120	15471	5746	629	14614	6094	1512	2553	9419	7853
- National Competition Council	4	4	8	.	7	1	.	8	.	1	.	5	2
- Productivity Commission	105	88	193	1	186	6	5	181	7	12	22	149	10
- Royal Australian Mint	80	54	134	.	133	1	2	131	1	36	23	70	5
Veterans' Affairs	999	1227	2226	18	2046	162	86	1405	735	99	158	1326	643
- Australian War Memorial	101	105	206	3	144	59	8	128	70	4	8	130	64
<b>Total</b>	<b>62338</b>	<b>81187</b>	<b>143525</b>	<b>3018</b>	<b>102686</b>	<b>37821</b>	<b>4717</b>	<b>93356</b>	<b>45452</b>	<b>8289</b>	<b>10613</b>	<b>84524</b>	<b>40099</b>

Source: APSED

**Table 48: Ongoing staff: classification by EEO group and sex, 30 June 2007**

Classification	Indigenous			Disability			English Speaking Background			
	Yes	No	No data	Yes	No	No data	NESB 1	NESB 2	Eng. Spkng.	No data
<b>Men</b>										
APS 1	62	286	173	58	274	189	25	44	299	153
APS 2	46	1075	761	127	938	817	105	156	1065	556
APS 3	182	4720	2590	252	3738	3502	391	560	4033	2508
APS 4	198	5907	2785	453	5024	3413	613	594	4482	3201
APS 5	159	5617	2776	303	5023	3226	447	599	5181	2325
APS 6	154	9517	3775	527	8656	4263	868	1026	8204	3348
EL 1	97	9164	2637	414	8463	3021	702	903	7455	2838
EL 2	58	6085	1199	238	5660	1444	312	526	4835	1669
SES 1	8	1039	124	35	989	147	23	49	824	275
SES 2	1	307	37	10	291	44	10	17	237	81
SES 3	.	79	8	4	74	9	2	8	62	15
Trainee	15	78	135	4	98	126	6	17	133	72
Graduate APS	7	290	187	5	305	174	30	36	276	142
<b>Total men</b>	<b>987</b>	<b>44164</b>	<b>17187</b>	<b>2430</b>	<b>39533</b>	<b>20375</b>	<b>3534</b>	<b>4535</b>	<b>37086</b>	<b>17183</b>
<b>Women</b>										
APS 1	166	569	331	39	725	302	69	90	598	309
APS 2	88	2201	1396	133	2134	1418	220	327	1985	1153
APS 3	366	9863	3864	298	7909	5886	919	1138	7528	4508
APS 4	589	12781	6062	721	11366	7345	1137	1267	9733	7295
APS 5	341	7948	2915	287	7569	3348	657	888	6754	2905
APS 6	234	11532	3342	388	10991	3729	963	1161	9621	3363
EL 1	151	8625	1762	279	8269	1990	556	826	7127	2029
EL 2	33	3670	567	110	3524	636	179	273	2910	908
SES 1	7	639	61	20	609	78	12	38	514	143
SES 2	1	154	11	.	147	19	.	9	121	36
SES 3	.	32	1	1	30	2	.	.	28	5
Trainee	28	65	69	2	74	86	2	11	94	55
Graduate APS	27	443	253	9	476	238	41	50	425	207
<b>Total women</b>	<b>2031</b>	<b>58522</b>	<b>20634</b>	<b>2287</b>	<b>53823</b>	<b>25077</b>	<b>4755</b>	<b>6078</b>	<b>47438</b>	<b>22916</b>
<b>Total</b>										
APS 1	228	855	504	97	999	491	94	134	897	462
APS 2	134	3276	2157	260	3072	2235	325	483	3050	1709
APS 3	548	14583	6454	550	11647	9388	1310	1698	11561	7016
APS 4	787	18688	8847	1174	16390	10758	1750	1861	14215	10496
APS 5	500	13565	5691	590	12592	6574	1104	1487	11935	5230
APS 6	388	21049	7117	915	19647	7992	1831	2187	17825	6711
EL 1	248	17789	4399	693	16732	5011	1258	1729	14582	4867
EL 2	91	9755	1766	348	9184	2080	491	799	7745	2577
SES 1	15	1678	185	55	1598	225	35	87	1338	418
SES 2	2	461	48	10	438	63	10	26	358	117
SES 3	.	111	9	5	104	11	2	8	90	20
Trainee	43	143	204	6	172	212	8	28	227	127
Graduate APS	34	733	440	14	781	412	71	86	701	349
<b>Total</b>	<b>3018</b>	<b>102686</b>	<b>37821</b>	<b>4717</b>	<b>93356</b>	<b>45452</b>	<b>8289</b>	<b>10613</b>	<b>84524</b>	<b>40099</b>

Source: APSED

**Table 49: Ongoing staff: highest educational qualification by EEO group and sex, 30 June 2007**

Highest educational qualification	Indigenous			Disability			English Speaking Background				
	Yes	No	No data	Yes	No	No data	NESB 1	NESB 2	Eng. Spkng.	No data	
	<b>Men</b>										
No data	523	14415	11319	694	12320	13243	1203	1406	13276	10372	
Doctorate	5	896	164	34	865	166	208	102	655	100	
Masters	15	2412	506	119	2245	569	472	268	1850	343	
Postgraduate diploma	27	3039	406	189	2766	517	286	333	2354	499	
Bachelor degree	104	10156	2262	416	9451	2655	904	1167	8192	2259	
Undergraduate diploma	15	875	120	51	777	182	55	86	675	194	
Associate diploma	49	1925	597	169	1676	726	140	170	1771	490	
Skilled vocational qualification	21	1034	389	93	884	467	46	117	1102	179	
Basic vocational qualification	6	289	79	21	253	100	8	36	277	53	
Year 12	119	6856	855	405	6288	1137	168	619	5101	1942	
Year 11	17	805	126	72	720	156	16	91	564	277	
Year 10	65	1271	327	144	1117	402	26	125	1120	392	
Less than year 10	21	191	37	23	171	55	2	15	149	83	
<b>Total men</b>	<b>987</b>	<b>44164</b>	<b>17187</b>	<b>2430</b>	<b>39533</b>	<b>20375</b>	<b>3534</b>	<b>4535</b>	<b>37086</b>	<b>17183</b>	
	<b>Women</b>										
No data	1137	24405	14908	901	21868	17681	2043	2449	19937	16021	
Doctorate	.	461	56	12	447	58	84	45	339	49	
Masters	19	2110	289	78	1982	358	427	182	1538	271	
Postgraduate diploma	40	3484	359	146	3265	472	300	344	2757	482	
Bachelor degree	171	11460	2245	345	10663	2868	1087	1382	9215	2192	
Undergraduate diploma	25	930	116	45	890	136	103	86	719	163	
Associate diploma	116	2548	806	159	2283	1028	185	214	2259	812	
Skilled vocational qualification	52	1258	297	65	1083	459	68	102	1202	235	
Basic vocational qualification	25	568	124	18	546	153	26	48	557	86	
Year 12	174	6502	834	256	6119	1135	268	731	5178	1333	
Year 11	60	1228	124	50	1198	164	54	145	917	296	
Year 10	179	3156	432	183	3066	518	96	307	2521	843	
Less than year 10	33	412	44	29	413	47	14	43	299	133	
<b>Total women</b>	<b>2031</b>	<b>58522</b>	<b>20634</b>	<b>2287</b>	<b>53823</b>	<b>25077</b>	<b>4755</b>	<b>6078</b>	<b>47438</b>	<b>22916</b>	
	<b>Total</b>										
No data	1660	38820	26227	1595	34188	30924	3246	3855	33213	26393	
Doctorate	5	1357	220	46	1312	224	292	147	994	149	
Masters	34	4522	795	197	4227	927	899	450	3388	614	
Postgraduate diploma	67	6523	765	335	6031	989	586	677	5111	981	
Bachelor degree	275	21616	4507	761	20114	5523	1991	2549	17407	4451	
Undergraduate diploma	40	1805	236	96	1667	318	158	172	1394	357	
Associate diploma	165	4473	1403	328	3959	1754	325	384	4030	1302	
Skilled vocational qualification	73	2292	686	158	1967	926	114	219	2304	414	
Basic vocational qualification	31	857	203	39	799	253	34	84	834	139	
Year 12	293	13358	1689	661	12407	2272	436	1350	10279	3275	
Year 11	77	2033	250	122	1918	320	70	236	1481	573	
Year 10	244	4427	759	327	4183	920	122	432	3641	1235	
Less than year 10	54	603	81	52	584	102	16	58	448	216	
<b>Total</b>	<b>3018</b>	<b>102686</b>	<b>37821</b>	<b>4717</b>	<b>93356</b>	<b>45452</b>	<b>8289</b>	<b>10613</b>	<b>84524</b>	<b>40099</b>	

Source APSED

**Table 50: Ongoing engagements: classification by EEO group, 2006-07**

Classification	Indigenous			Disability			English Speaking Background				
	Yes	No	No data	Yes	No	No data	NESB 1	NESB 2	Eng. Spkng.	No data	
	<b>Men</b>										
APS 1	37	70	25	2	82	48	5	6	82	39	
APS 2	10	195	193	5	178	215	23	27	257	91	
APS 3	42	1460	488	27	999	964	119	120	1052	699	
APS 4	10	642	397	18	402	629	77	40	501	431	
APS 5	13	383	446	6	379	457	43	53	532	214	
APS 6	13	636	531	21	599	560	84	60	704	332	
EL 1	2	464	294	12	410	338	51	38	445	226	
EL 2	2	271	128	15	230	156	23	16	209	153	
SES 1	1	41	21	.	29	34	1	1	25	36	
SES 2	.	13	8	.	8	13	1	.	7	13	
SES 3	.	2	4	.	2	4	.	.	1	5	
Trainee	6	59	164	3	67	159	5	11	113	100	
Graduate APS	9	285	186	6	299	175	30	33	275	142	
<b>Total men</b>	<b>145</b>	<b>4521</b>	<b>2885</b>	<b>115</b>	<b>3684</b>	<b>3752</b>	<b>462</b>	<b>405</b>	<b>4203</b>	<b>2481</b>	
	<b>Women</b>										
APS 1	75	155	46	3	173	100	10	17	161	88	
APS 2	22	382	350	3	374	377	31	50	513	160	
APS 3	155	3701	1021	51	2432	2394	218	279	2668	1712	
APS 4	28	1146	487	24	852	785	75	86	962	538	
APS 5	18	658	371	12	651	384	43	64	688	252	
APS 6	19	947	387	18	891	444	69	69	873	342	
EL 1	7	402	196	13	389	203	31	37	374	163	
EL 2	3	142	59	4	119	81	11	6	111	76	
SES 1	1	15	10	.	13	13	.	2	10	14	
SES 2	.	6	2	.	4	4	.	.	2	6	
SES 3	.	2	1	.	2	1	.	.	1	2	
Trainee	23	39	96	2	37	119	4	6	74	74	
Graduate APS	17	451	255	10	475	238	42	54	421	206	
<b>Total women</b>	<b>368</b>	<b>8046</b>	<b>3281</b>	<b>140</b>	<b>6412</b>	<b>5143</b>	<b>534</b>	<b>670</b>	<b>6858</b>	<b>3633</b>	
	<b>Total</b>										
APS 1	112	225	71	5	255	148	15	23	243	127	
APS 2	32	577	543	8	552	592	54	77	770	251	
APS 3	197	5161	1509	78	3431	3358	337	399	3720	2411	
APS 4	38	1788	884	42	1254	1414	152	126	1463	969	
APS 5	31	1041	817	18	1030	841	86	117	1220	466	
APS 6	32	1583	918	39	1490	1004	153	129	1577	674	
EL 1	9	866	490	25	799	541	82	75	819	389	
EL 2	5	413	187	19	349	237	34	22	320	229	
SES 1	2	56	31	.	42	47	1	3	35	50	
SES 2	.	19	10	.	12	17	1	.	9	19	
SES 3	.	4	5	.	4	5	.	.	2	7	
Trainee	29	98	260	5	104	278	9	17	187	174	
Graduate APS	26	736	441	16	774	413	72	87	696	348	
<b>Total</b>	<b>513</b>	<b>12567</b>	<b>6166</b>	<b>255</b>	<b>10096</b>	<b>8895</b>	<b>996</b>	<b>1075</b>	<b>11061</b>	<b>6114</b>	

Source: APSED

**Table 51: Ongoing separations: classification by EEO group, 2006-07**

Classification	Indigenous			Disability			English Speaking Background				
	Yes	No	No data	Yes	No	No data	NESB 1	NESB 2	Eng. Spkng.	No data	
	<b>Men</b>										
APS 1	35	31	21	5	47	35	1	3	52	31	
APS 2	4	80	65	9	75	65	5	12	93	39	
APS 3	32	530	233	28	403	364	27	50	446	272	
APS 4	24	391	197	26	371	215	43	37	316	216	
APS 5	18	393	215	29	355	242	27	34	364	201	
APS 6	11	709	325	54	641	350	53	61	632	299	
EL 1	3	590	208	31	548	222	36	51	504	210	
EL 2	2	402	81	23	367	95	16	35	308	126	
SES 1	2	62	6	6	56	8	1	4	48	17	
SES 2	.	18	3	3	17	1	.	.	13	8	
SES 3	.	10	1	.	9	2	.	.	8	3	
Trainee	3	7	14	1	10	13	.	1	13	10	
Graduate APS	5	12	6	2	12	9	2	1	15	5	
<b>Total men</b>	<b>139</b>	<b>3235</b>	<b>1375</b>	<b>217</b>	<b>2911</b>	<b>1621</b>	<b>211</b>	<b>289</b>	<b>2812</b>	<b>1437</b>	
	<b>Women</b>										
APS 1	27	60	30	4	74	39	11	9	65	32	
APS 2	18	180	103	13	183	105	15	25	180	81	
APS 3	77	1278	366	28	851	842	64	94	887	676	
APS 4	48	738	360	47	685	414	45	61	613	427	
APS 5	28	440	161	26	426	177	18	40	404	167	
APS 6	14	731	232	24	681	272	47	63	629	238	
EL 1	10	403	111	16	404	104	18	27	369	110	
EL 2	3	182	26	5	175	31	5	12	146	48	
SES 1	.	36	2	3	30	5	2	2	25	9	
SES 2	.	6	1	1	5	1	.	1	2	4	
SES 3	.	1	.	.	1	.	.	.	1	.	
Trainee	3	7	6	.	8	8	.	1	9	6	
Graduate APS	1	18	9	.	19	9	2	1	20	5	
<b>Total women</b>	<b>229</b>	<b>4080</b>	<b>1407</b>	<b>167</b>	<b>3542</b>	<b>2007</b>	<b>227</b>	<b>336</b>	<b>3350</b>	<b>1803</b>	
	<b>Total</b>										
APS 1	62	91	51	9	121	74	12	12	117	63	
APS 2	22	260	168	22	258	170	20	37	273	120	
APS 3	109	1808	599	56	1254	1206	91	144	1333	948	
APS 4	72	1129	557	73	1056	629	88	98	929	643	
APS 5	46	833	376	55	781	419	45	74	768	368	
APS 6	25	1440	557	78	1322	622	100	124	1261	537	
EL 1	13	993	319	47	952	326	54	78	873	320	
EL 2	5	584	107	28	542	126	21	47	454	174	
SES 1	2	98	8	9	86	13	3	6	73	26	
SES 2	.	24	4	4	22	2	.	1	15	12	
SES 3	.	11	1	.	10	2	.	.	9	3	
Trainee	6	14	20	1	18	21	.	2	22	16	
Graduate APS	6	30	15	2	31	18	4	2	35	10	
<b>Total</b>	<b>368</b>	<b>7315</b>	<b>2782</b>	<b>384</b>	<b>6453</b>	<b>3628</b>	<b>438</b>	<b>625</b>	<b>6162</b>	<b>3240</b>	

Source: APSED